



The View

*This menu is an homage to our surroundings.
Being inspired by what we see from the View
of Le Hibou and Ingredients that we have around
us in this beautiful country.*

*Each drink reflects its characteristics in one
way or another to the sight, building or landscape
for you to enjoy.*

*By sipping your drink and enjoy
The View.*

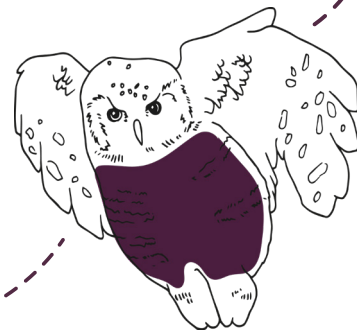


Le Hibou | Arsenalsgatan 6 | Stockholm

STOCKHOLM IN MY <3**

(SKANSEN)

Patron Silver, Campari,
Grapefruit, Lime & Milk



STOCKHOLM SYNDROME

(NORRMALMSTORG)

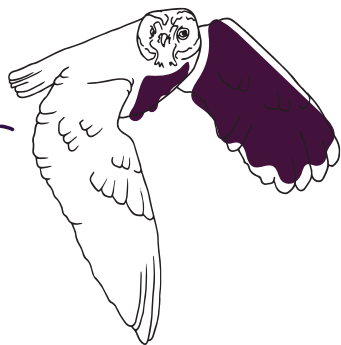
Beefeater 24, Rowanberry / Plum
Vermouth, Honey & Soda



THEATRE CLUB***

(THE ROYAL DRAMATIC THEATRE)

Absolut Vodka, Calvados, Lillet Blanc,
Pears, Whey



MAIDEN VOYAGE***

(VASA MUSEUM)

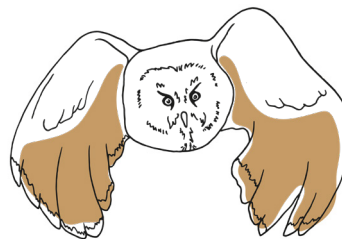
Bacardi Superior, Pistachio,
Orgeat & Seabuckthorn Wine



HANAMI GARDEN

(KUNGSTRÄDGÅRDEN)

Roku Gin, Mancino Sakura,
Mint Cordial & Sakura Tea



NORDIC & CO

(NK DEPARTMENT STORE)

Naked Malt, Galliano,
Cloudberries & Cardamom

POP EXPRESS

(GRÖNA LUND AMUSEMENT PARK)

Absolut Vodka, Pisco, Puffed Rice,
Figs & Lemon



THREE CROWN FIZZ*

(CITY HALL)

Martell VS, Cointreau, Apples, Sherry,
Browned Butter, Vanilla & Soda
(Can be made non alcoholic)

TASTE OF TIME

(THE NORDIC MUSEUM)

OP Björk, Lillet Blanc, Lingonberry
Vinegar, Spruce & Sour Milk



DAY TRADE BREAK

(THE GLASS ROOF)

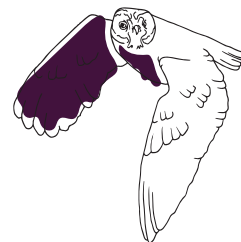
Michter's Rye, Martell VS, Patron XO,
Banana & Rock Candy



HOOT HOOT*

(ALWAYS AT LE HIBOU)

Bacardi 8, Naked Malt, Ginger, Apple,
Honey & Lemon



The View

Cocktails: 195 sek

* Non alcoholic cocktail 100 sek

** *Contains Lactose* | *** *Contains Nuts*